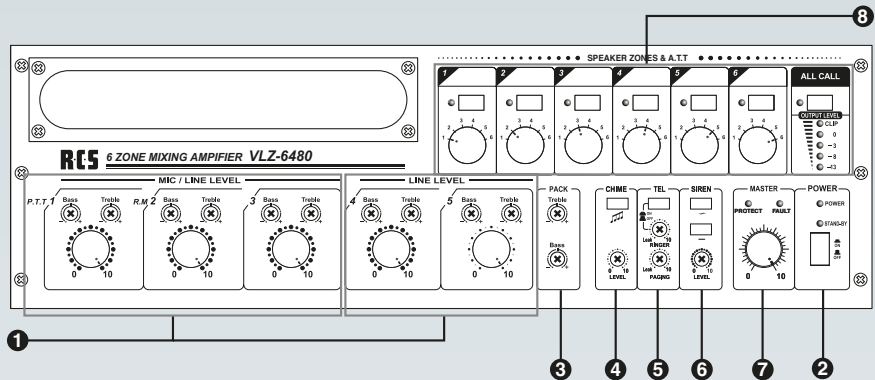


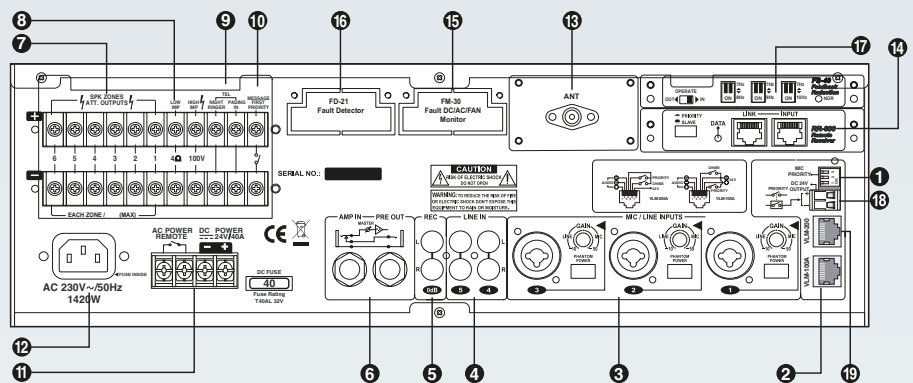
Front view

- 1 Inputs for MIC / LINE control
- 2 Power switch
- 3 Bass/Treble control for embedded moduls
- 4 Chime switch and volume control
- 5 NIGHT-RINGER switch, volume control for RINGER and Paging-input
- 6 Siren switch, up-down tone / constant tone and volume control for siren
- 7 Master volume control
- 8 6 zones, all-call switch and control unit



Rear view

- 1 MIC priority switch
- 2 MIC-1 with chime release for VLM-100A (RJ-45)
- 3 MIC / LINE Inputs 1 – 3
- 4 LINE Inputs 4 + 5
- 5 REC output, unbalanced 0dB
- 6 AMP-IN and PRE-OUT, Jack 6,3 mm, unbalanced.
- 7 100V and 70 V speaker outputs, 6 separately controlled circuits
- 8 Low impedance outputs, 4 ohms
- 9 NIGHT-RINGER and PAGING-IN
- 10 Terminal for priority switch of the Digital text module DMT-10
- 11 Terminal for 24V DC power supply and Power Remote
- 12 IEC power inlet (cold condition)
- 13 Antenna connector IEC plug (only with installed tuner module)
- 14 Terminal for remote microphone desks VLM-106/206
- 15 Shaft for optional Error Monitoring Module FM-30
- 16 Shaft for optional pilot tone Module FD-21
- 17 Shaft for optional Frequency Shift-Module FS-40
- 18 DC 24V output for obligatory call (for VLM-100A, VLM-200A)
- 19 Connection for VLM-200A (RJ-45)

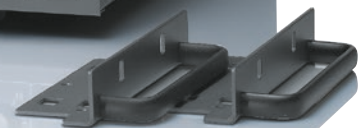


Technical data	VLZ-6240A	VLZ-6480A	VLZ-6600A
Output power	360/240 W (Program/RMS)	720/480 W RMS (Program/RMS)	900/600 W RMS (Program/RMS)
Frequency resp., noise level	55 Hz – 20.000 Hz (better than -3 dB), MIC better than 70 dB, LINE better than 80 dB		
THD at 1 kHz	better than 1 % at 1kHz		
Inputs MIC – AUX/LINE	All Mic/Line-Inputs are electronically balanced. Input 1+2 with priority. All Mic/Line-Inputs feature combo-females (Jack 6.3 mm, XLR). Mic: -50dB (2,45 mV), Line: -10dB (245 mV)		
Outputs, speakers	100V, 70 V, low impedance 4 ohms		
Additional input or output	AMP-IN: +4dB (1,23 V), PRE-OUT: 0dBu (775 mV)		
Chime and Siren	2- or 4-tone chime (switchable); siren with up-down or continuous tone (adjustable on the frontside)		
Power Supply AC/DC	AC 230 V (50/60 Hz), DC 24V		
Dimensions (WxHxD); Weight	483x133x356 mm; 14 kg	483x133x356 mm; 20 kg	483x133x356 mm; 22 kg

3 power classes
240-480-600 W



VLM -206



Supplied with 19" mounting brackets.

- + 6 SPEAKER LINES
- + MONITORING OF THE BASIC FUNCTIONS
- + UP TO 600W (RMS) POWER

Description

The „VARIO-LINE“ amplifier and microphone system permits the switching of up to **6 speaker zones** and of the all-call function as well as the setting of the desired volume for each zone from the central unit.

The amplifier can be used with any microphone, but has been optimized for the use with the „VARIO-LINE“ microphone stations VLM-100A, VLM-106 (digital remote control of the speaker zones) and VLM-206 (digital remote control of the speaker zones and the DMT-10 digital announcement module).

Please consider the following features:

- Inputs 1 - 3 can be switched to MIC or LINE. The respective volume as well as treble and bass are controlled separately and have always priority over LINE-IN.
- All MIC inputs have gain control and switchable phantom power. The priority switches define the priority of the inputs.
- The MIC inputs are balanced combo sockets. MIC-1 is additional on RJ-45 socket for VLM-100A. The LINE inputs are RCA sockets.
- Optionally available are the Module FD-21 monitor the amplifier. Further available the Module FM-30 with fan/fuse fault relay contacts and the FS-40 Frequency-Shift-Module.
- The AMP-IN and PRE-OUT sockets allow cascading of further amplifiers. The 5 output circuits may also be used for this purpose after they have been modified (VLZ-SERVICE 01).
- The unit is also equipped with an electronic 2- or 4-tone chime (switchable), an electronic siren (high-low, switchable to alarm sound) and a telephone paging input (Line-in with priority); all these signals can be controlled separately on the front panel.

- The amplifier operates on mains power (230 V) or 24 V DC (emergency power supply).
- A special feature of all models is the option for integrating a sound source module. An empty compartment is provided for the installation of an additional module. The following modules are available:

FM/AM Tuner module
18x FM + 6x AM memory stations

TP-10 USB



DAB Internet Radio
DAB/DAB+, FM-RDS, USB

TP-200 IR



CD/MP3-Player module
Repeat, Random, etc

CDP-10 USB



CD/MP3-Tuner module
RDS-Tuner and MP3-/CD-Player

CDR-10 USB



Digital text module
with timer functions, microSD-Card

DMT-10



BT-Player module
USB-Port/SD-Card, Remote

BM-10 U



For a detailed description of the modules see pages 126 and 127.

Model designations

- 6-ZONES „VARIO-LINE“, 240 W, (3 RU).....VLZ-6240 A**
- 6-ZONES „VARIO-LINE“, 480 W, (3 RU).....VLZ-6480 A**
- 6-ZONES „VARIO-LINE“, 600 W, (3 RU).....VLZ-6600 A**

VLM-100 A | for all-call

Microphone desk (condenser) with pre-announcement chime, priority switching via RJ-45 connection.



Microphone desk **VLM-100A**

VLM-106 | for 6 zones

Digital microphone desk to select and control 6 speaker zones. Pre-announcement chime and all-call.



Microphone desk **VLM-106**
 Microphone desk **VLM-106WO**
 as VLM-106 but without interface RR-60
 Function extension module **VLE-004**
 to remote special functions (via separate line)

VLM-206 | for 6 zones & text module

Digital microphone desk to select and control 6 separately speaker zones, further for remote control of the digital text module DMT-10.



Microphone desk **VLM-206**
 Microphone desk **VLM-206WO**
 as VLM-206 but without interface RR-60

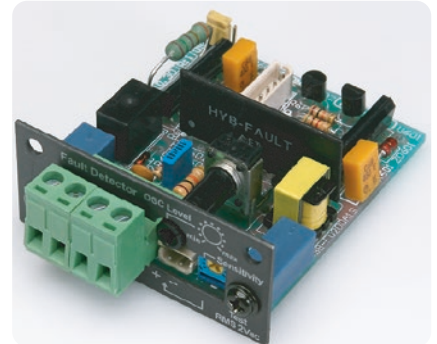
OPTIONAL | Pilot Tone Module

FD-21

Description

This pilot tone module serves to monitor the performance of amplifiers.

The generator produces a 20 kHz test signal. Apart from the test of the power amplifier functioning, the speaker line is checked for short circuit faults.



Pilot Tone Module **FD-21**
 Extension-Module for the VLZ-series

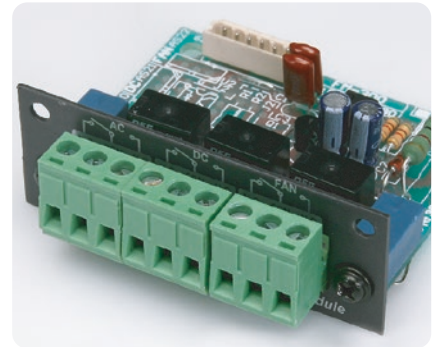
OPTIONAL | Error Monitoring Module

FM-30

Description

The Error Monitoring-Module has three potential-free relay contacts (NO/ NC).

Fault monitoring is operating if AC- or DC-fuse is blown and if AC- or DC-power is off or disconnected. Also the module reacts when fan fault or fan is disconnected.



Error Monitoring Module **FM-30**
 Extension-Module for the VLZ-series

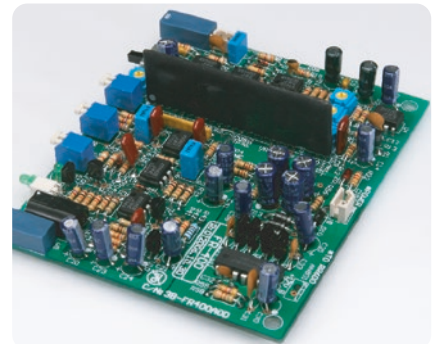
OPTIONAL | Frequency Shift Module

FS-40

Description

Module for the reduction of feedback noise (takes only effect at Input 1 of VLZ).

The possible frequency shifts of 7 - 10 Hz make sense, even if background music in addition to microphone announcements take place.



Frequency Shift Module **FS-40**
 Extension-Module for the VLZ-series

SPECIAL FUNCTIONS „VARIO-LINE“ 6-ZONES



OPTIONAL

